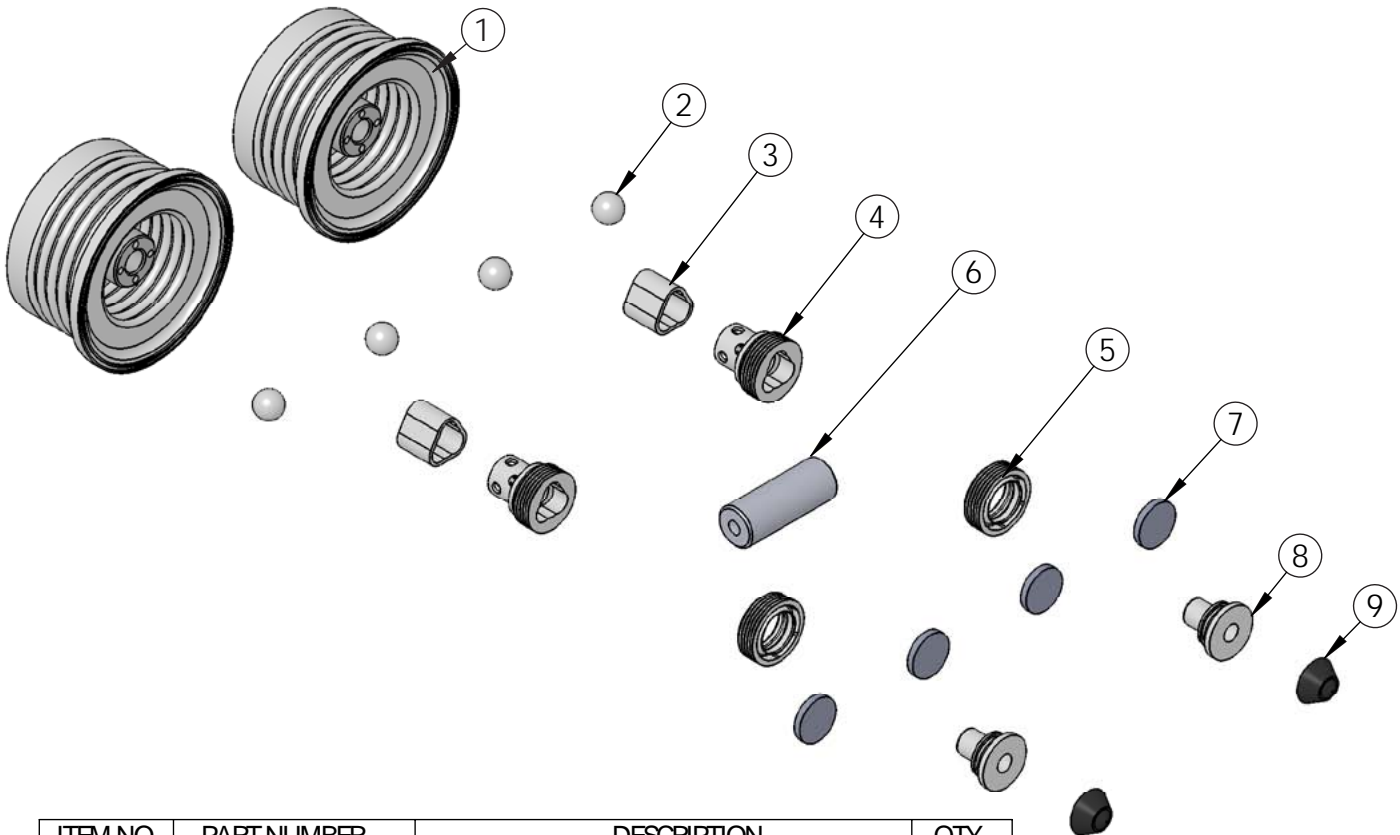


## RBPXA030B-1 Rebuild Kit

Rebuild kit for PXA030B pump is RBPXA030B-1. Rebuild kit for dry-run PXASD030B pump is RBPXASD030B-1. Contact White Knight for details. Pump rebuilds require tool kit: 12200-XX-0021 (Legacy# PXA030B-170).

*Note: Dry-run RBPXASD030B-1 pump rebuild kits include different shaft and shaft seals.*



ITEM NO.	PART NUMBER	DESCRIPTION	QTY.
1	14300-MP-0042	PXA030B BELLOWS ASSEMBLY	2
2	4100-MP-0004	CHECK BALL 1/2"	4
3	4135-MP-0006	CHECK SEAT BOTTOM HI-FLOW 25L & 30L	2
4	4142-MP-0004	CHECK CAGE TOP HI-FLOW 25L & 30L	2
5	5143-MP-0001	SEAL, SHAFT, 30L	2
6	5144-PF-0024	SHAFT, SOLID, PFA, 30L	1
7	6140-FP-0002	BAFFLE, .800"	4
8	6150-UH-0001	SEAT, QEV EXHAUST, 30L & 60L	2
9	3200-VI-0001	DIAPHRAGM, $\phi$ .782	2