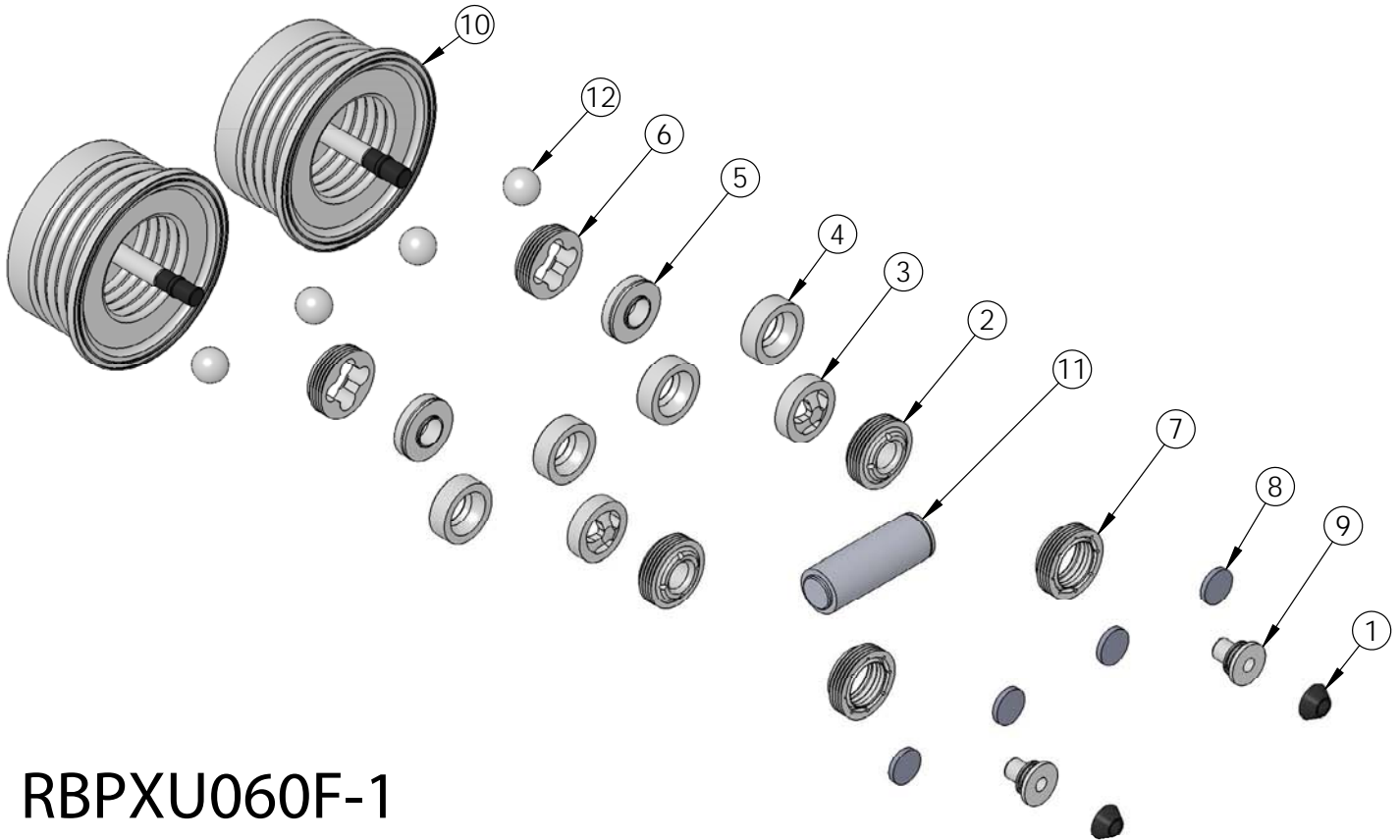


RBPXU060F-1 Rebuild Kit

Rebuild kit for PXU060F pump is RBPXU060F-1. Rebuild kit for dry-run PXUSD060F pump is RBPXUSD060F-1. To request rebuilds by White Knight, use RBPXU060F-5 or RBPXUSD060F-5. Contact White Knight for details. Pump rebuilds require tool kit: 12200-XX-0033 (Legacy# PXU060-170).

Note: Dry-run RBPXUSD060F-1 pump rebuild kits include different shaft and shaft seals.



RBPXU060F-1

ITEM NO.	PART NUMBER	DESCRIPTION	QTY.
1	3200-VI-0001	DIAPHRAGM, ϕ .782	2
2	4135-MP-0014	BOTTOM CHECK SEAT, LOWER	2
3	4137-TE-0010	BOTTOM CHECK CAGE, 10 GPM	2
4	4137-TE-0011	MIDDLE CHECK CAGE, 10 GPM	4
5	4142-MP-0008	TOP CHECK SEAT, UPPER	2
6	4142-TE-0013	TOP CHECK CAGE, 10 GPM	2
7	5143-MP-0004	SEAL, SHAFT, U-SERIES, 60L	2
8	6140-FP-0002	BAFFLE, .800"	4
9	6150-UH-0001	SEAT, QEV EXHAUST, 30L & 60L	2
10	14300-MP-0022	BELLOWS ASSEMBLY, 60L U-SERIES, PROXIMITY	2
11	14320-PF-0004	LOADED SHAFT ASSEMBLY, 60L, U-SERIES, CERAMIC	1
12	4100-PF-0001	CHECK BALL, 3/4"	4