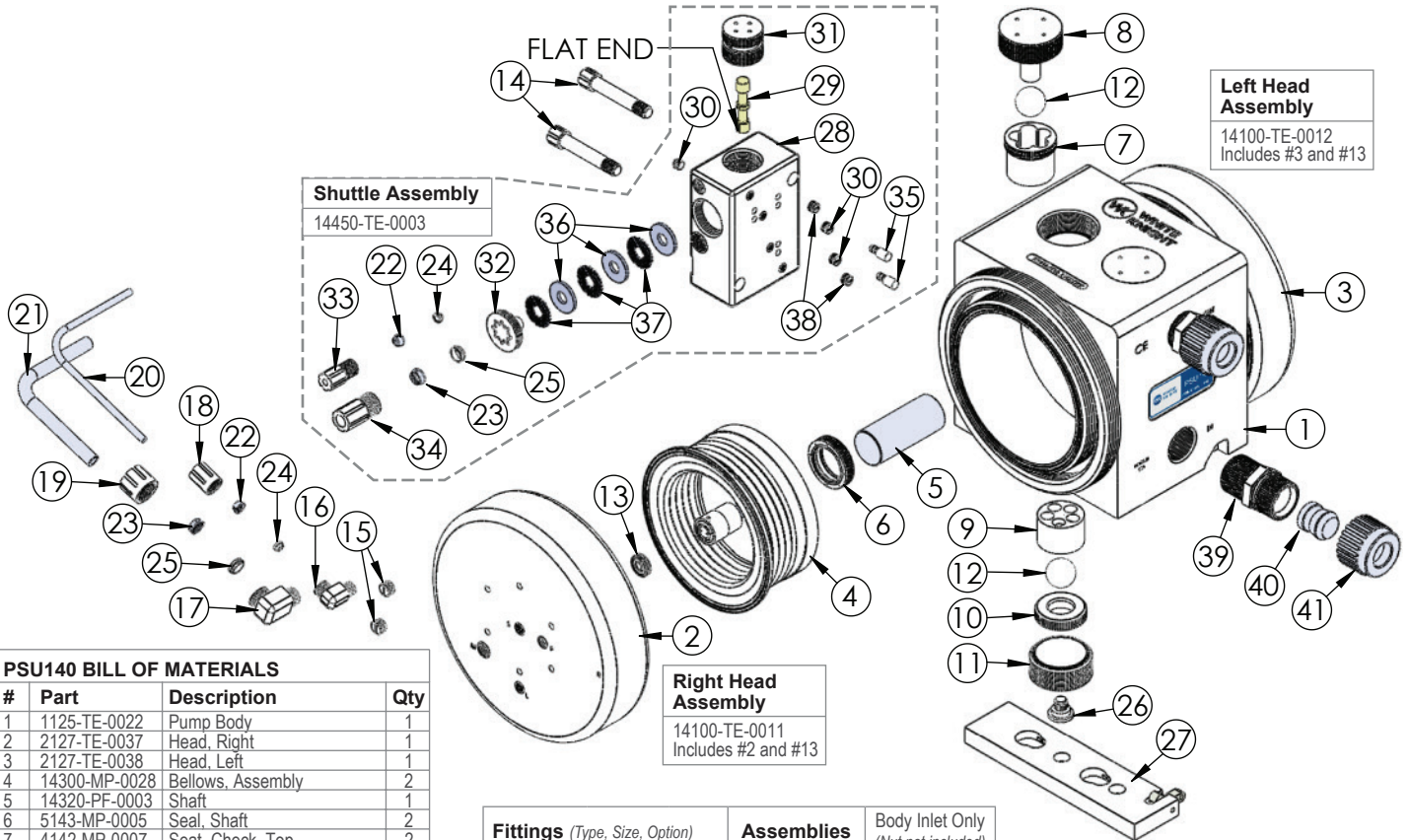



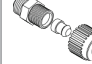






PSU140 Exploded View



PSU140 BILL OF MATERIALS

#	Part	Description	Qty
1	1125-TE-0022	Pump Body	1
2	2127-TE-0037	Head, Right	1
3	2127-TE-0038	Head, Left	1
4	14300-MP-0028	Bellows, Assembly	2
5	14320-PF-0003	Shaft	1
6	5143-MP-0005	Seal, Shaft	2
7	4142-MP-0007	Seat, Check, Top	2
8	4140-TE-0007	Plug, Check	2
9	4137-TE-0003	Cage, Check	2
10	4135-MP-0009	Seat, Check	2
11	4139-TE-0006	Plug, Check	2
12	4100-MP-0003	Ball, Check, 1-1/8"	4
13	3133-TE-0006	Seat, Head, Shift	2
14	10010-TE-0016	Screw, Mount, Shuttle	2
15	10040-TE-0003	Plug, NPT, 1/4"	4
16	6030-TE-0005	Elbow, Gripper, 1/4" NPT x 1/4" With Bleed Hole	2
17	6020-TE-0005	Elbow Gripper 3/8 NPT x 1/2"	2
18	6070-TE-0001	Female Gripper Nut, 1/4"	2
19	6070-TE-0003	Nut Female Gripper 1/2"	2
20	10071-PF-0008	Tubing, Thickwall, 1/4"	2
21	10071-PF-0011	Tubing, 1/2"	2
22	6080-KF-0001	Gripper, 1/4"	4
23	6080-KF-0003	Gripper, 1/2"	4
24	6080-TE-0001	Ferrule, 1/4"	4
25	6080-TE-0003	Ferrule, 1/2"	4
26	10010-TE-0018	Screw, Mount, Plate, Base	2
27	14200-TE-0004	Plate, Base, Assembly	1
28	14400-TE-0011	Body, Shuttle With Sleeve	1
29	6560-CE-0003	Shuttle Spool	1
30	10040-TE-0002	Plug, NPT, 1/8"	3
31	6530-TE-0003	Shuttle End Cap	2
32	6150-TE-0017	Cap, Muffler	2
33	6070-TE-0004	Male Gripper Nut, 1/4"	2
34	6070-TE-0006	1/2" Male Gripper Nut	2
35	10020-TE-0004	Pin, Alignment, Shuttle	2
36	6140-PF-0004	Baffle	6
37	6140-PP-0002	Spacer, Baffle	6
38	10040-TE-0015	Plug, Vent, NPT, 1/8"	2
39	7400-TE-0007	Fitting S-300@ Body 1" 140	2
40	7400-PF-0003	Insert S-300@ 1"	2
41	7400-PF-0007	Nut S-300@ 1"	2

Fittings (Type, Size, Option)			Assemblies	Body Inlet Only (Nut not included)
	1/2 in.	F08	14510-PF-0011	7200-PF-0015
	3/4 in.	F12	14510-PF-0008	7200-PF-0009
	1 in.	F16	14510-PF-0009	7200-PF-0010
	1-1/4 in.	F20	14510-PF-0010	7200-PF-0011
	3/4 in.	T12	7120-PF-0007	
	1 in.	T16	7120-PF-0008	
	1-1/4 in.	T20	7120-PF-0009	
	1-1/2 in.	T24	7120-PF-0010	
	3/4 in.	W12	7300-PF-0005	
	1 in.	W16	7300-PF-0006	
	1/2 in.	P08	14530-PF-0011	7400-TE-0019
	3/4 in.	P12	14530-PF-0006	7400-TE-0006
	1 in.	P16	14530-PF-0007	7400-TE-0007
	1-1/4 in.	P20	14530-PF-0008	7400-TE-0008
	1-1/2 in.	P24	14530-PF-0026 7400-TE-0035	
	3/4 in.	N12	7100-TE-0009	
	1 in.	N16	7100-TE-0005	
	1-1/4 in.	N20	7100-TE-0010	
	1/2 in.	S08	TBD	7010-TE-0008
	3/4 in.	S12	14520-TE-0008	7010-TE-0007
	1 in.	S16	14520-TE-0007	7010-TE-0009
	3/4 in.	L12	14570-PF-0006	7800-TE-0006
	1 in.	L16	14570-PF-0007	7800-TE-0007
	1-1/4 in.	L20	7800-PF-0008	7800-TE-0008
		B00	7130-TE-0005	

Leak Detect		
Part	Description	
14600-XX-0009	LF0	15 ft fiber optic cable with no amplifier
14600-XX-0010	LF1	15 ft fiber optic cable with D10 amplifier
14600-XX-0011	LF2	25 ft fiber optic cable with no amplifier
14600-XX-0012	LF3	25 ft fiber optic cable with D10 amplifier
14600-XX-0031	LC0	15 ft conductivity cable
14600-XX-0040	LC1	25 ft conductivity cable

Stroke Detect with Fiber Optics		
Part	Description	
14700-XX-0013	SF0	15 ft fiber optic cable with no amplifier
14700-XX-0014	SF1	15 ft fiber optic cable with D10 amplifier
14700-XX-0015	SF2	25 ft fiber optic cable with no amplifier
14700-XX-0016	SF3	25 ft fiber optic cable with D10 amplifier

Stroke Detect with Pressure Switch		
Part	Description	
14900-NP-0004	SP1	Single NPN Switch
14900-NP-0003	SP2	Dual NPN Switches
14900-NP-0001	SP4	Single PNP Switch
14900-NP-0002	SP5	Dual PNP Switches

<https://wkfluidhandling.com/psu-series/>