



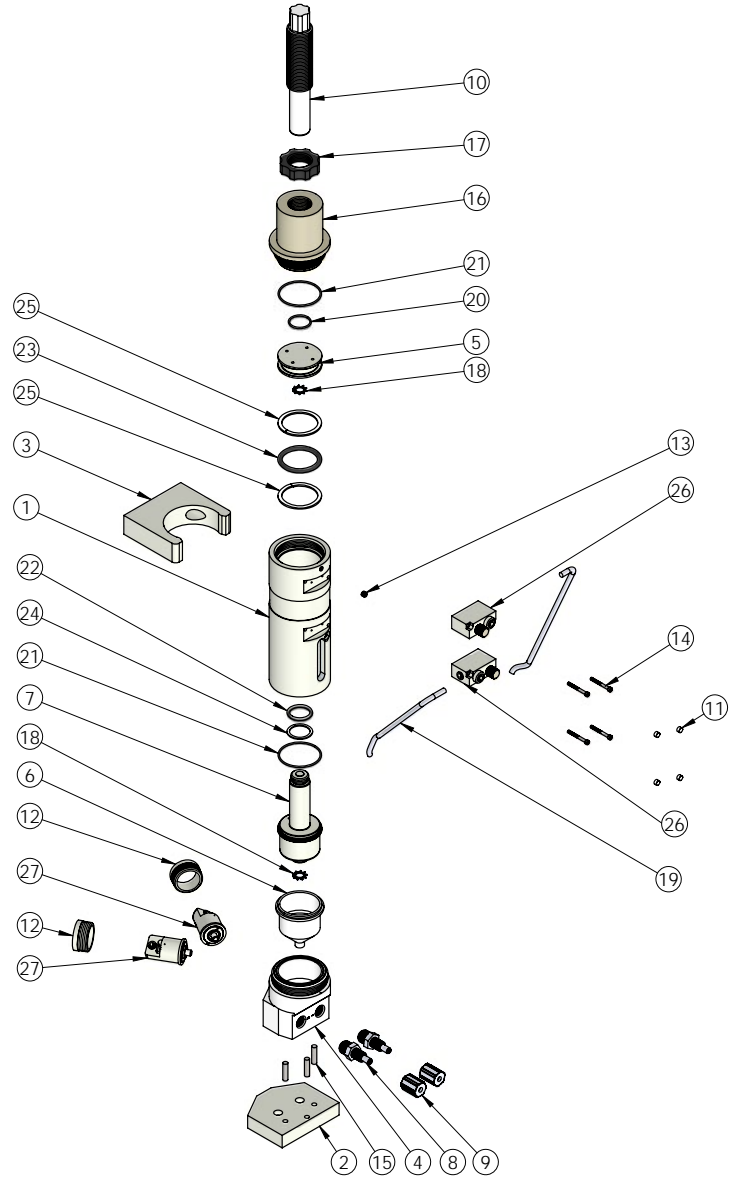
WHITE KNIGHT®

.....engineer approved™

EXPLODED VIEW

PPM100 Exploded View

PPM100 BILL OF MATERIALS			
ITEM NO.	PART NUMBER	DESCRIPTION	QTY.
1	1125-NP-0003	BODY, PPM100	1
2	1146-NP-0014	PLATE, BASE	1
3	1146-NP-0015	CLAMP, MOUNTING	1
4	2127-TE-0077	HEAD	1
5	3135-NP-0001	PISTON	1
6	3200-MP-0001	DIAPHRAGM, ROLLING	1
7	5144-NP-0001	SHAFT	1
8	7200-PF-0012	1/4" FLARETEK LIQUID FITTING	2
9	7210-PF-0001	1/4" FLARETEK NUT	2
10	8140-UH-0001	STEM, STROKE, ADJUSTABLE	1
11	10010-NP-0008	COVER SCREW	4
12	10010-NP-0010	NUT, VALVE, 1/4" WK	2
13	10010-NY-0001	SET SCREW	1
14	10010-SS-0002	SCREW	4
15	10020-SS-0001	PIN, DOWEL	3
16	10040-EP-0001	CAP, END, PISTON	1
17	10050-BP-0002	RING, LOCK	1
18	10050-SS-0004	WASHER, LOCK	2
19	10070-PF-0001	TUBING, 1/4", THICK WALL	1
20	10080-VI-022-75	O-RING, 022 X .070	1
21	10080-VI-033-75	O-RING, 033 X .070	2
22	10080-VI-214-75	O-RING, 214 X .139	1
23	10080-VI-327-75	O-RING, 327 X .210	1
24	10081-TE-214-55	RING, BACK-UP, 214 X .119	1
25	10081-TE-327-55	RING, BACK-UP, 327 X .183	2
26	14460-XX-0001	CONTROLLER, SPEED, ASSEMBLY	2
27	14470-XX-0002	VALVE ASSEMBLY	2



<https://wkfluidhandling.com/ppm100/>

