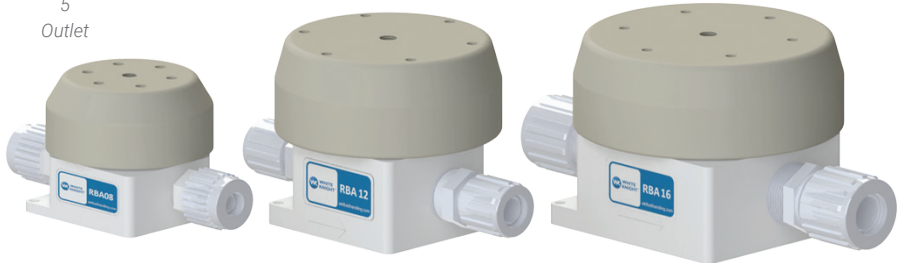
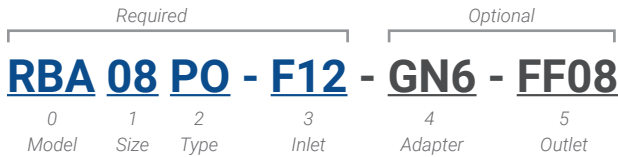


Configuration



Instructions

Options 0-3 are required; 4-5 are optional.
 Contact us for revision or copy exact information.

0. Model	
Back-Pressure Regulator	RBA

1. Size	
1/2-in.	08
3/4-in.	12
1-in.	16

*Flow through is 1/8-in. smaller than fitting size.

2. Type	
Poppet (for slurry)	PO

4. Gauge Port Adapter		
Plugged	-	Blank
Flaretek Compatible	1/4 in.	GF4
	3/8 in.	GF6
Pillar S-300	1/8 in.	GP2
	1/4 in.	GP4
	3/8 in.	GP6
Primelock	1/4 in.	GL4
	3/8 in.	GL6
FNPT	1/4 in.	GN4
	3/8 in.	GN6

*GL4 is not compatible with RBA08.

3. Liquid Inlet Fitting		Compatible Sizes		
		08	12	16
Flaretek Compatible	1/4 in.	F04	-	-
	3/8 in.	F06	-	-
	1/2 in.	F08	F08	-
	3/4 in.	F12	F12	F12
	1 in.	-	F16	F16
Pillar S-300	1/4 in.	P04	-	-
	3/8 in.	P06	P06	-
	1/2 in.	P08	P08	P08
	3/4 in.	P12	P12	P12
	1 in.	-	P16	P16
	1-1/4 in.	-	P20	P20
Primelock	1/2 in.	L08	L08	-
	3/4 in.	L12	L12	L12
	1 in.	-	L16	L16
	1-1/4 in.	-	-	L20
Tube Adapter	1/4 in.	T04	-	-
	3/8 in.	T06	-	-
	1/2 in.	T08	T08	-
	3/4 in.	T12	T12	T12
	1 in.	-	T16	T16
	1-1/4 in.	-	T20	T20
FNPT	1/4 in.	N04	-	-
	3/8 in.	N06	-	-
	1/2 in.	N08	N08	-
	3/4 in.	N12	N12	N12
	1 in.	-	N16	N16
Weldable	1/2 in.	W08	W08	-
	3/4 in.	W12	W12	W12
	1 in.	-	W16	W16

5. Liquid Outlet Fitting (Front straight only)		Compatible Sizes		
		08	12	16
Same Outlet as Inlet		blank	blank	blank
Flaretek Compatible	1/4 in.	FF04	-	-
	3/8 in.	FF06	-	-
	1/2 in.	FF08	FF08	-
	3/4 in.	FF12	FF12	FF12
	1 in.	-	FF16	FF16
	1-1/4 in.	-	FF20	FF20
Pillar S-300	1/4 in.	P04	-	-
	3/8 in.	P06	P06	-
	1/2 in.	P08	P08	P08
	3/4 in.	P12	P12	P12
	1 in.	-	P16	P16
	1-1/4 in.	-	FP20	FP20
Primelock	1/2 in.	FL08	FL08	-
	3/4 in.	FL12	FL12	FL12
	1 in.	-	FL16	FL16
	1-1/4 in.	-	-	FL20
Tube Adapter	1/4 in.	FT04	-	-
	3/8 in.	FT06	-	-
	1/2 in.	FT08	FT08	-
	3/4 in.	FT12	FT12	FT12
	1 in.	-	FT16	FT16
	1-1/4 in.	-	FT20	FT20
FNPT	1/4 in.	FN04	-	-
	3/8 in.	FN06	-	-
	1/2 in.	FN08	FN08	-
	3/4 in.	FN12	FN12	FN12
	1 in.	-	FN16	FN16
Weldable	1/2 in.	FW08	FW08	-
	3/4 in.	FW12	FW12	FW12
	1 in.	-	FW16	FW16

Example Configurations

RBA08PO-F12	Highlighted options	RFA 1/2-in., Sleeved, Flaretek Compatible inlet and outlet fittings
RBA12PO-P12-GN6		RFA 3/4-in., Sleeved, 3/4-in. inlet and outlet fittings, 3/4-in. FNPT gauge port adapter
RBA12PO-P12-FP08		RFA 3/4-in., Sleeved, 3/4-in. Pillar S-300 inlet fitting, 1/2-in. Pillar S-300 outlet fitting
RBA12PO-P12-GN6-FP08		RFA 3/4-in., Poppet, 3/4-in. Pillar S-300 inlet fitting, 1/2-in. Pillar S-300 outlet fitting, 3/4-in. FNPT gauge port adapter