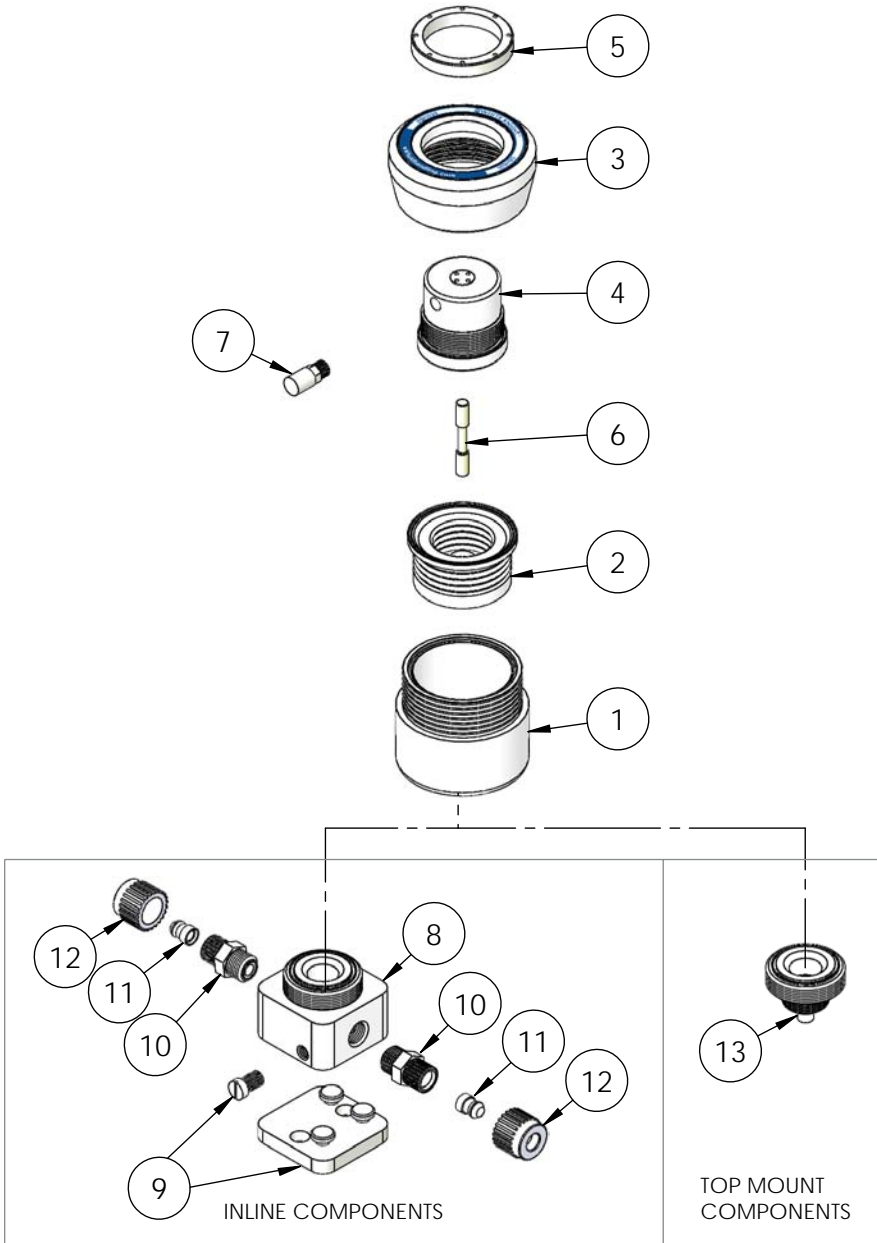


DBH030 Exploded View



| DBH030 Bill Of Materials | | | |
|--------------------------|---------------|-------------------------|-----|
| Item | Part | Description | Qty |
| 1 | 9400-TE-0001 | Body, Dampener | 1 |
| 2 | 14300-MP-0032 | Bellows Assembly | 1 |
| 3 | 2127-TE-0060 | Head Dbh030 | 1 |
| 4 | 14860-XX-0001 | Pd Air Motor Assembly | 1 |
| 5 | 9300-TE-0006 | Ring, Retaining | 1 |
| 6 | 6560-CE-0005 | Spool | 1 |
| 7 | 6110-PP-0004 | Muffler | 1 |
| 8 | 9100-TE-0008 | Base, Inline, 030 | 1 |
| 9 | 14200-NP-0009 | Baseplate Assembly | 1 |
| 10 | 7400-TE-0001 | Body, S-300®, 1/2" | 2 |
| 11 | 7400-PF-0001 | Insert, S-300®, 1/2" | 2 |
| 12 | 7400-PF-0005 | Nut, S-300®, 1/2" | 2 |
| 13 | 9200-TE-0008 | Adapter, Top Mount, 030 | 1 |

| Fittings (Type, Size, Option) | | Assemblies | Body Inlet Only (Nut not included) |
|-------------------------------|-------------|---------------|------------------------------------|
| Flaretek Compatible | 1/4 in. F04 | 14510-PF-0016 | 7200-PF-0001 |
| | 3/8 in. F06 | 14510-PF-0001 | 7200-PF-0002 |
| | 1/2 in. F08 | 14510-PF-0002 | 7200-PF-0003 |
| | 3/4 in. F12 | 14510-PF-0003 | 7200-PF-0004 |
| Tube Out | 3/8 in. T06 | 7120-PF-0001 | |
| | 1/2 in. T08 | 7120-PF-0002 | |
| | 3/4 in. T12 | 7120-PF-0003 | |
| Weldable | 1/2 in. W08 | 7300-PF-0001 | |
| | 3/4 in. W12 | 7300-PF-0002 | |
| Pillar S-300 | 1/4 in. P04 | 14530-PF-0025 | 7400-TE-0031 |
| | 3/8 in. P06 | 14530-PF-0012 | 7400-TE-0023 |
| | 1/2 in. P08 | 14530-PF-0001 | 7400-TE-0001 |
| | 3/4 in. P12 | 14530-PF-0002 | 7400-TE-0002 |
| FNPT | 1/4 in. N04 | 7100-TE-0001 | |
| | 3/8 in. N06 | 7100-TE-0002 | |
| | 1/2 in. N08 | 7100-TE-0003 | |
| | 3/4 in. N12 | 7100-TE-0007 | |
| Synchro-Flare | 3/8 in. S06 | 14520-TE-0009 | 7010-TE-0001 |
| | 1/2 in. S08 | 14520-TE-0001 | 7010-TE-0003 |
| | 3/4 in. S12 | 14520-TE-0002 | 7010-TE-0002 |
| PrimeLock | 1/4 in. L04 | 14570-PF-0013 | 7800-TE-0013 |
| | 3/8 in. L06 | 14570-PF-0014 | 7800-TE-0014 |
| | 1/2 in. L08 | 14570-PF-0001 | 7800-TE-0001 |
| | 3/4 in. L12 | 14570-PF-0002 | 7800-TE-0002 |
| Plugged | B00 | 7130-TE-0001 | |